

SETTINGS FOR CONNECTING RESOURCE ADSL MODEM

MODEM INSTALLATION

1. **DON'T** connect your modem at the beginning of this installation.
2. Insert CD – 'auto run' should perform automatically, If not please double click setup.exe on your CD-rom
3. Click to "Accept" the terms and conditions
4. At the prompt please plug the modem into the USB port on your computer.
5. The modem software will now install automatically
6. An icon "BT Voyager 105 ADSL Modem connection" should appear on your desktop. Double-clicking on this will log you onto the internet. Your first log on will ask you for your log on details. Enter as below and click on 'dial'
 - a. Username: (see welcome letter)
 - b. Password: (see welcome letter)
 - c. Enter tick in "save password" box
7. In order to avoid a buzzing on the line, you will need one ADSL filter (small white phone splitter supplied in box) per extension in your house. We supply extra filters at £2 each.

WINDOWS SETTINGS

To ensure that Internet Explorer always uses your Resource ADSL connection to surf the internet:

1. Open Internet Explorer
2. Click Tools, then Internet Options
3. Select the Connections tab
4. Select "BT Voyager 105 ADSL Modem connection" and press "Set Default" (Resource recommends that all other connections be removed if not required). Ensure the marker is set to "Always dial my default connection".

EMAIL SETTINGS

Setup existing email address

5. Open Outlook Express
6. Click Tools, then Accounts.
7. Highlight your email address and click Properties.
8. Goto Server tab and change the following:

Incoming mail: **whatever your existing incoming setting is** (e.g pop3/mail.freemove.co.uk)

Incoming mail: **mail.resource24.net** (if you have a Resource email address)

Outgoing (SMTP) mail: **relay.prodigynet.co.uk**

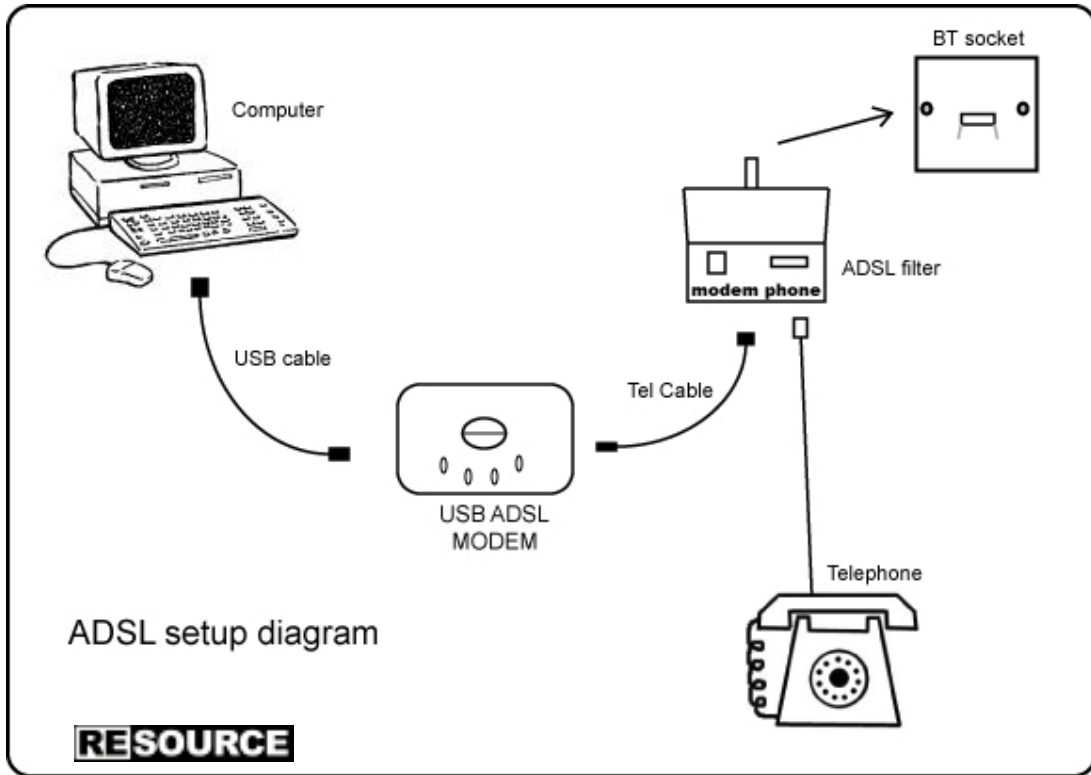
New email address

If you would like an email address through Resource (yourname@resource24.net) please call us.

If you require further information please call Simon on 0870 877 0000

RESOURCE

MODEM / TELEPHONE SETUP



If you require further information please call Jasim on 0870 877 0000